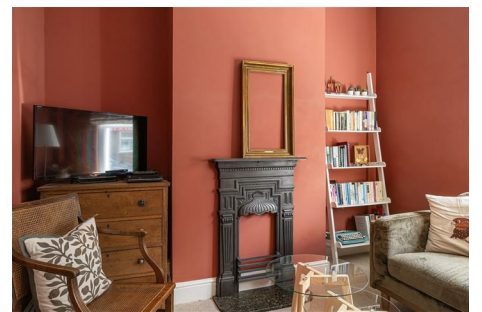
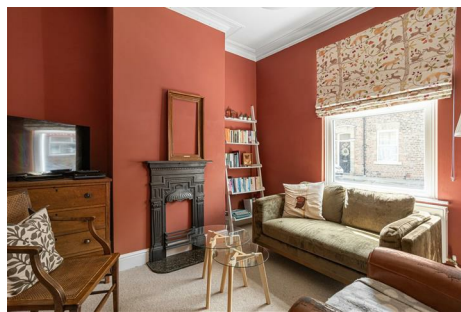


N A I S H

ESTATE AGENTS



YORK  
EST. 1939



## 26 Walpole Street

, York, YO31 8NN

A well-presented terraced home located just a short stroll from the City Centre, York Hospital and popular commuter links. Operating for the last few years as a successful holiday let, this property has been thoughtfully remodelled to include en-suites to both bedrooms.

**£260,000**

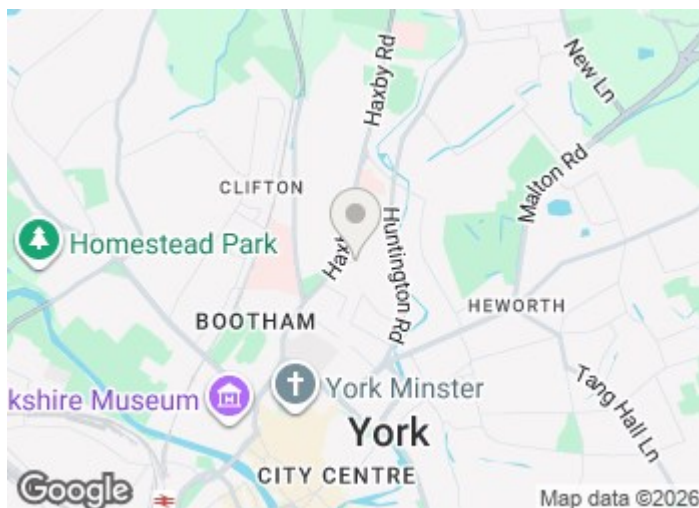
# 26 Walpole Street

, York, YO31 8NN



- Terraced Home
- Two En-Suites
- Two Reception Rooms
- Immaculate Condition
- Two Bedrooms
- No Onward Chain

## Offer Procedure

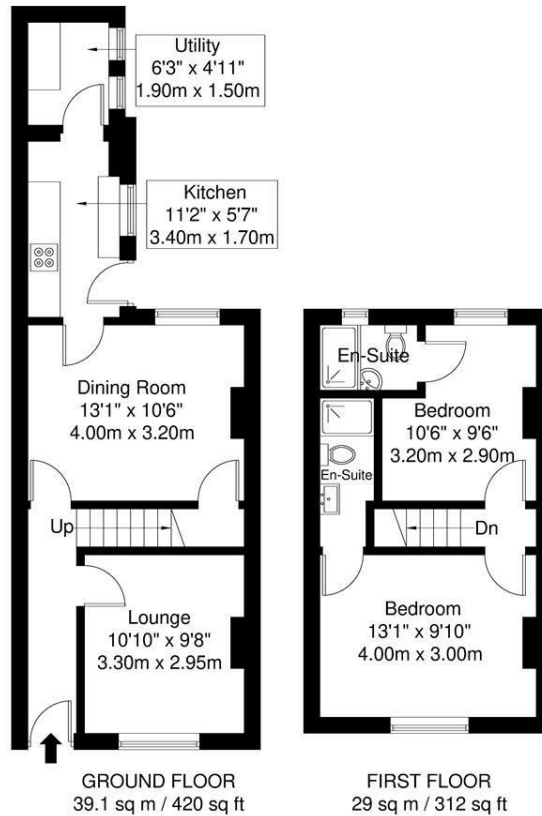


## Directions



# Floor Plan

## 26 Walpole Street



**APPROXIMATE GROSS INTERNAL AREA = 68.1 sq m / 732 sq ft**

Whilst every attempt has been made to ensure the accuracy of the floorplan contained here, measurements of doors, windows, rooms and any other items are approximate and no responsibility is taken for any error, omission or mis-statement. This plan is for illustrative purposes only and should be used as such by any prospective purchaser. The services, systems and appliances shown have not been tested and no guarantee as to their operability or efficiency can be given.

These particulars, whilst believed to be accurate are set out as a general outline only for guidance and do not constitute any part of an offer or contract. Intending purchasers should not rely on them as statements of representation of fact, but must satisfy themselves by inspection or otherwise as to their accuracy. No person in this firm's employment has the authority to make or give any representation or warranty in respect of the property.

3 High Petergate, York, YO1 7EN  
Tel: 01904 653564 Email: naish@naishproperty.co.uk www.naishproperty.co.uk

Energy Efficiency Rating		Current	Potential
Very energy efficient - lower running costs			
(92 plus) <b>A</b>			
(81-91) <b>B</b>			
(69-80) <b>C</b>			
(55-68) <b>D</b>			
(39-54) <b>E</b>			
(21-38) <b>F</b>			
(1-20) <b>G</b>			
Not energy efficient - higher running costs			
<b>England &amp; Wales</b>		EU Directive 2002/91/EC	